



GOVERNMENT OFFICE
FOR THE NORTH WEST

Government Office for the North West

Jenni Gomes

Early years and Childcare



department for
children, schools and families



GOVERNMENT OFFICE
FOR THE NORTH WEST

What we are going to cover

- NW context
- Government Office role
- What we know about outcomes for children in Early Years in the North West
 - How they are changing
 - What are the key issues impacting on outcomes
 - What we are doing to improve outcomes in the NW



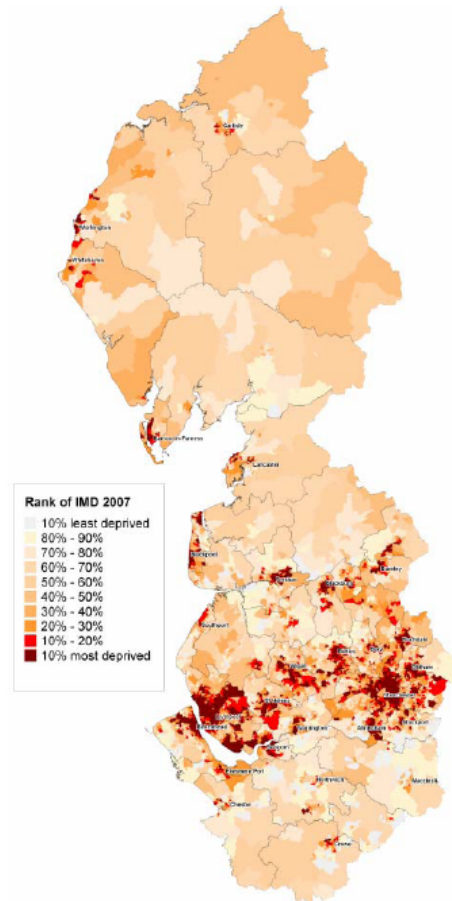
department for
children, schools and families



GOVERNMENT OFFICE
FOR THE NORTH WEST

Tackling Inequalities

Social Exclusion (PSAs 15, 16,17)



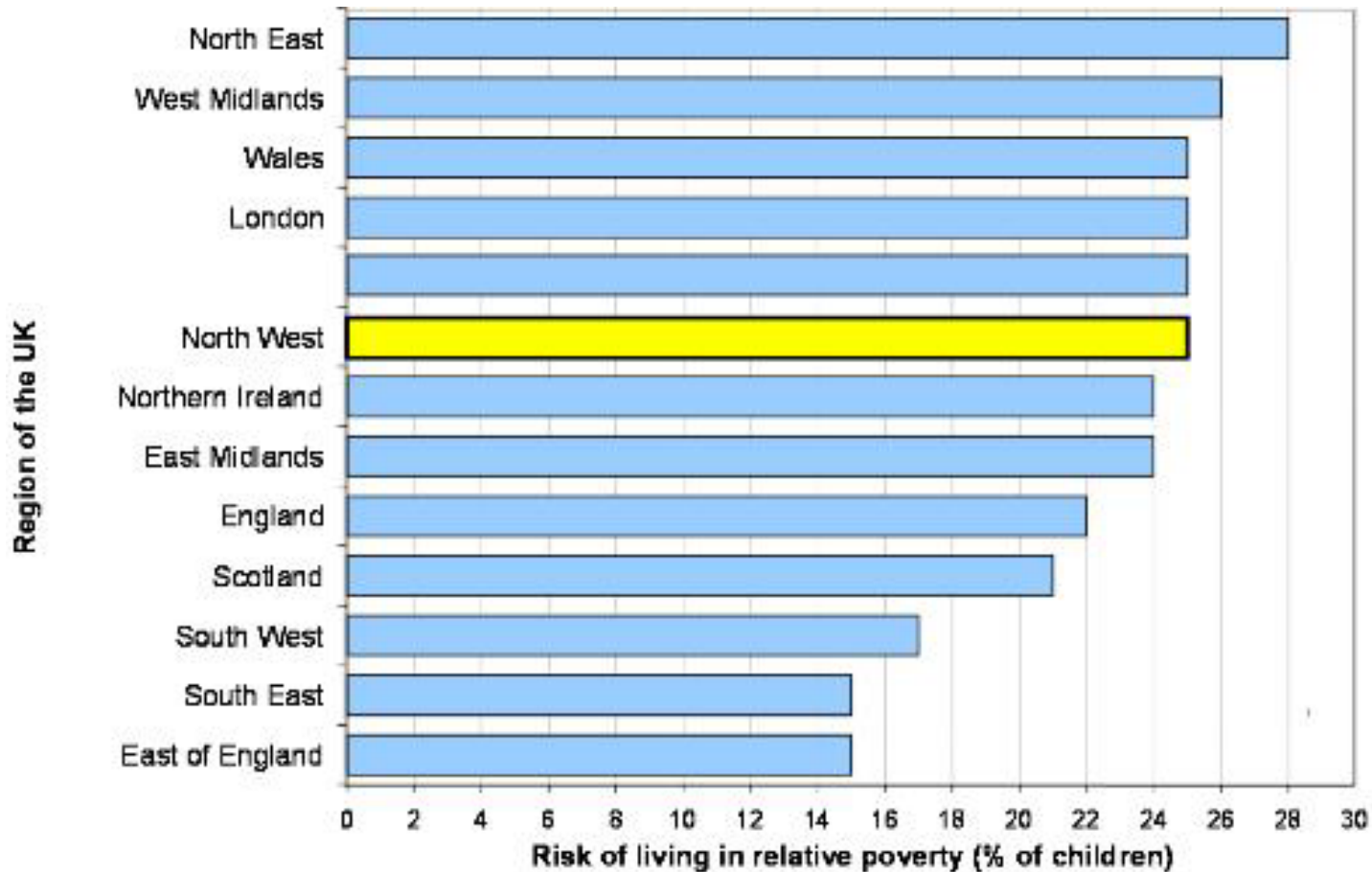
The North West is a region of contrasts, where areas of extreme deprivation exist alongside areas of wealth and prosperity. According to the **x Index of Multiple Deprivation**

- over a third of North West authorities feature in the worst performing 50 authorities Nationally.



department for
children, schools and families

Stark differences in risk of % of children living in Poverty for the regions





GOVERNMENT OFFICE
FOR THE NORTH WEST

Government Office Role

- 9 Regional Government Offices in England
- Provide “central government in the regions”
- Children and Learners Division established 2006
- Monitor, challenge and support LA’s on the delivery of the ECM agenda
- Children’s Services Advisers - strategic co-ordination of engagement plan with each LA and JISP
- LAA - Targets and Improvement support
- Policy Teams focus on specific themes and have place based knowledge



department for
children, schools and families



GOVERNMENT OFFICE
FOR THE NORTH WEST

Government Office Role

- Strengthen National Policies
 - *Ensuring policy is delivery friendly*
 - *Providing local intelligence*
 - *Reflecting local priorities, experience and concerns*
- Integrate regional strategies
 - *Connect Whitehall to key regional players*
 - *Connect national policies, regional strategy and local delivery*
 - *Build shared vision for stakeholders with different politics and priorities*

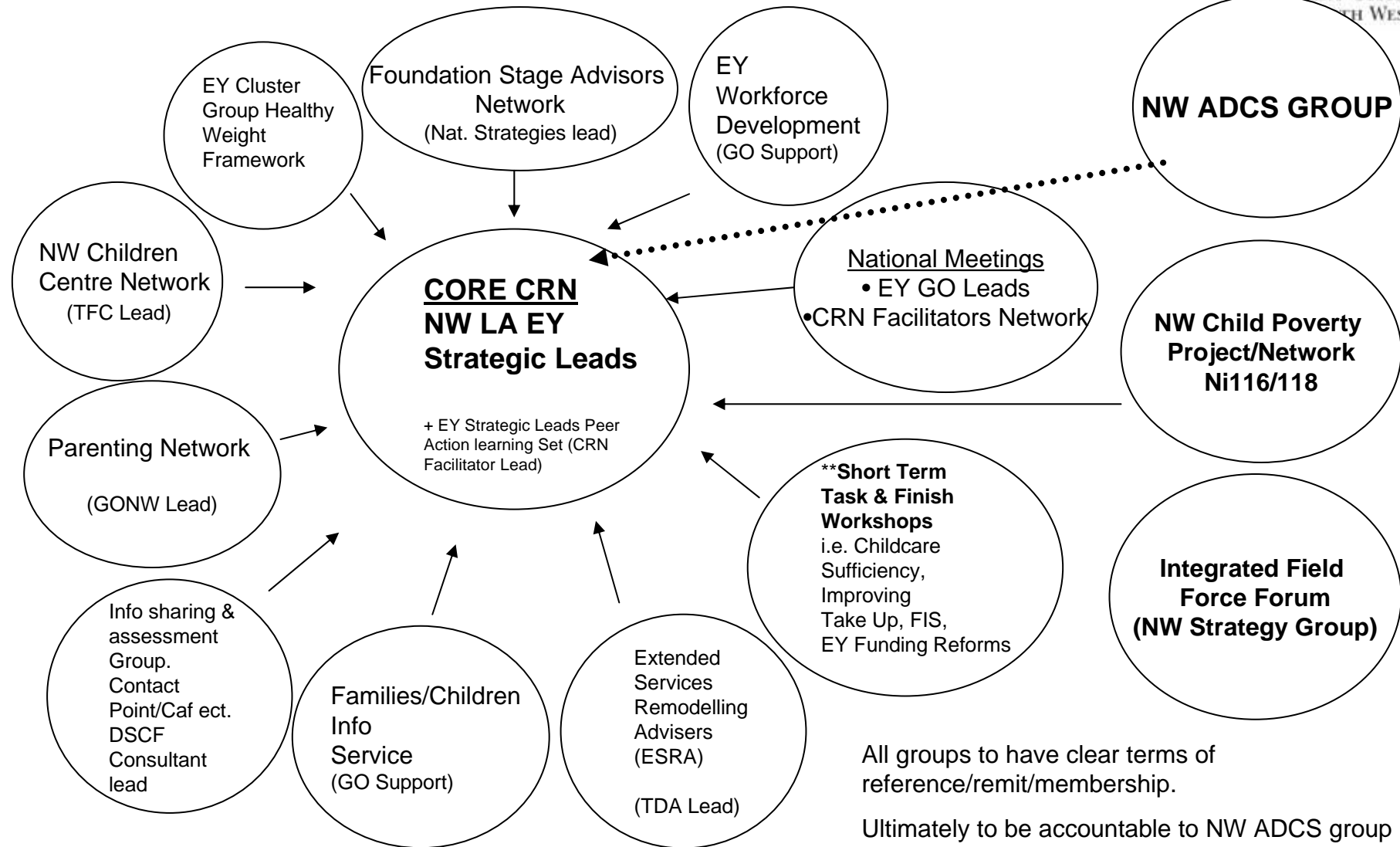


department for
children, schools and families

Leading and Managing the System



GOVERNMENT OFFICE
SOUTH WEST



All groups to have clear terms of reference/remit/membership.

Ultimately to be accountable to NW ADCS group

**Use short term "task and finish" groups/workshops where necessary – see CRN Work plan



GOVERNMENT OFFICE
FOR THE NORTH WEST

Leading and Managing the system

- Established the NW Field Force Forum an effectively collaboration – of key partners TDA, TfC, Nat Stats, CWDC, 4Children
 - Improved alignment through collective intelligence to add value to shared agendas "*.
- Established an excellent Early Years Regional Childcare Network
 - Co-ordination of support and challenge for LA's*
 - Joint intervention and assistance - as a critical friend to LA and partners.*
 - Developing peer action learning sets to capture and share learning of what works.*
 - Escalate action when issues not resolved.*



department for
children, schools and families



GOVERNMENT OFFICE
FOR THE NORTH WEST

Be Healthy (*PSA12*)

- Regional Healthy Weight framework launched
- EY Healthy Weight cluster group established
- GNW, NHS, DH, LA's, CSIP ,Ofsted, TfC, TDA, Nat Stats
- Membership from the key EY players to ensure synergy, improve alignment and improve support to improve regional delivery of locally agreed plans to improve outcomes.



department for
children, schools and families



GOVERNMENT OFFICE
FOR THE NORTH WEST

Be Healthy (*PSA12*)

- LAs improvement targets in 2008-11
- 8 NW LA's have prioritised NI 53: -Prevalence of Breastfeeding at 6- 8
- 6 NW LA's have prioritised NI 55: Obesity / children -Reception Year.
- 14 NW LA's have prioritised NI 56: Obesity / children - Primary schools.

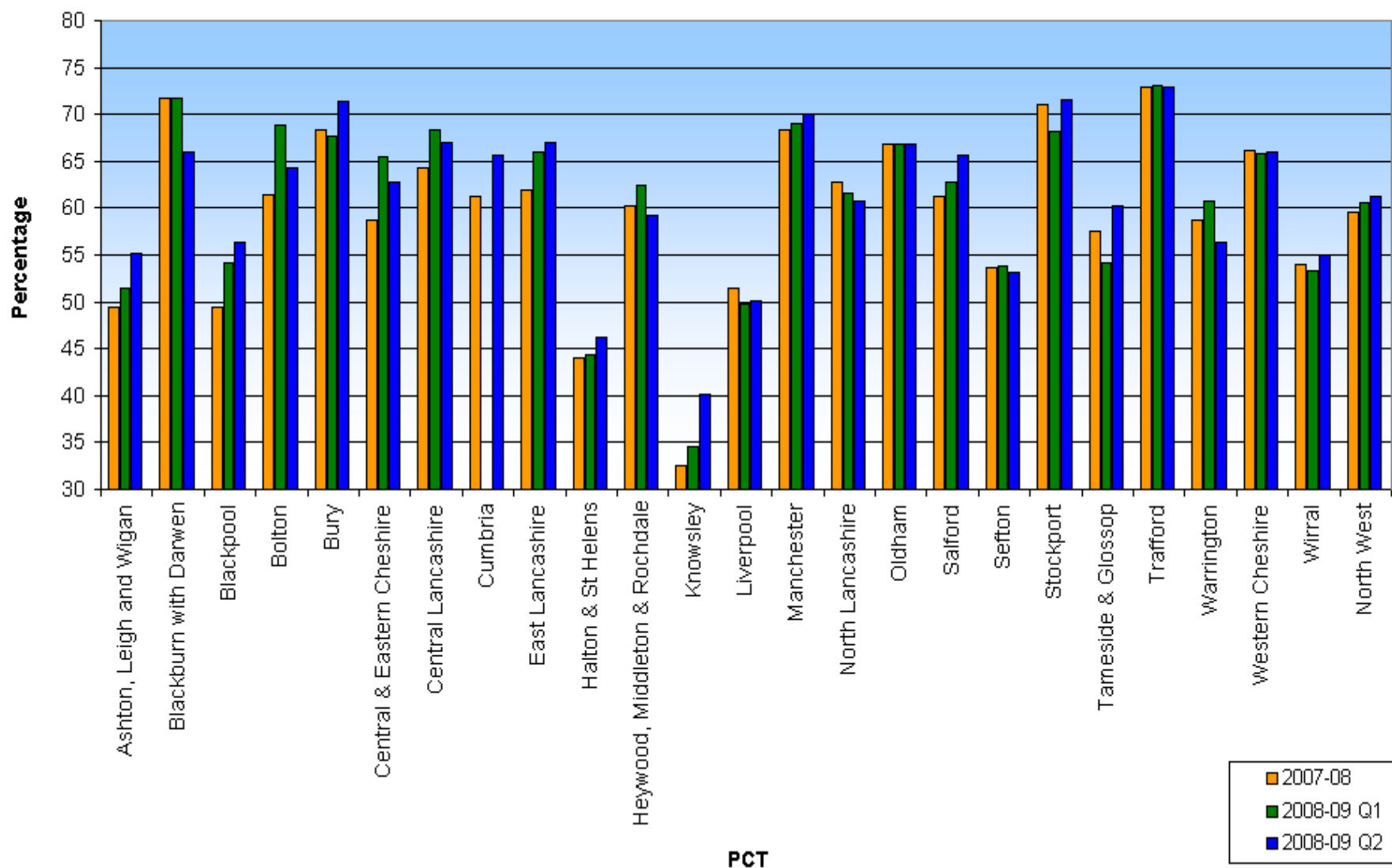


department for
children, schools and families



North West PCTs - Breastfeeding Initiation Rates

11
11





GOVERNMENT OFFICE
FOR THE NORTH WEST

Be Safe – (PSA 13)

- Supporting LAs in their development of Early support/childcare services for vulnerable children
- Working with REIP to:
 - *Develop Effective Pathways and models of service for supporting vulnerable children and young people*

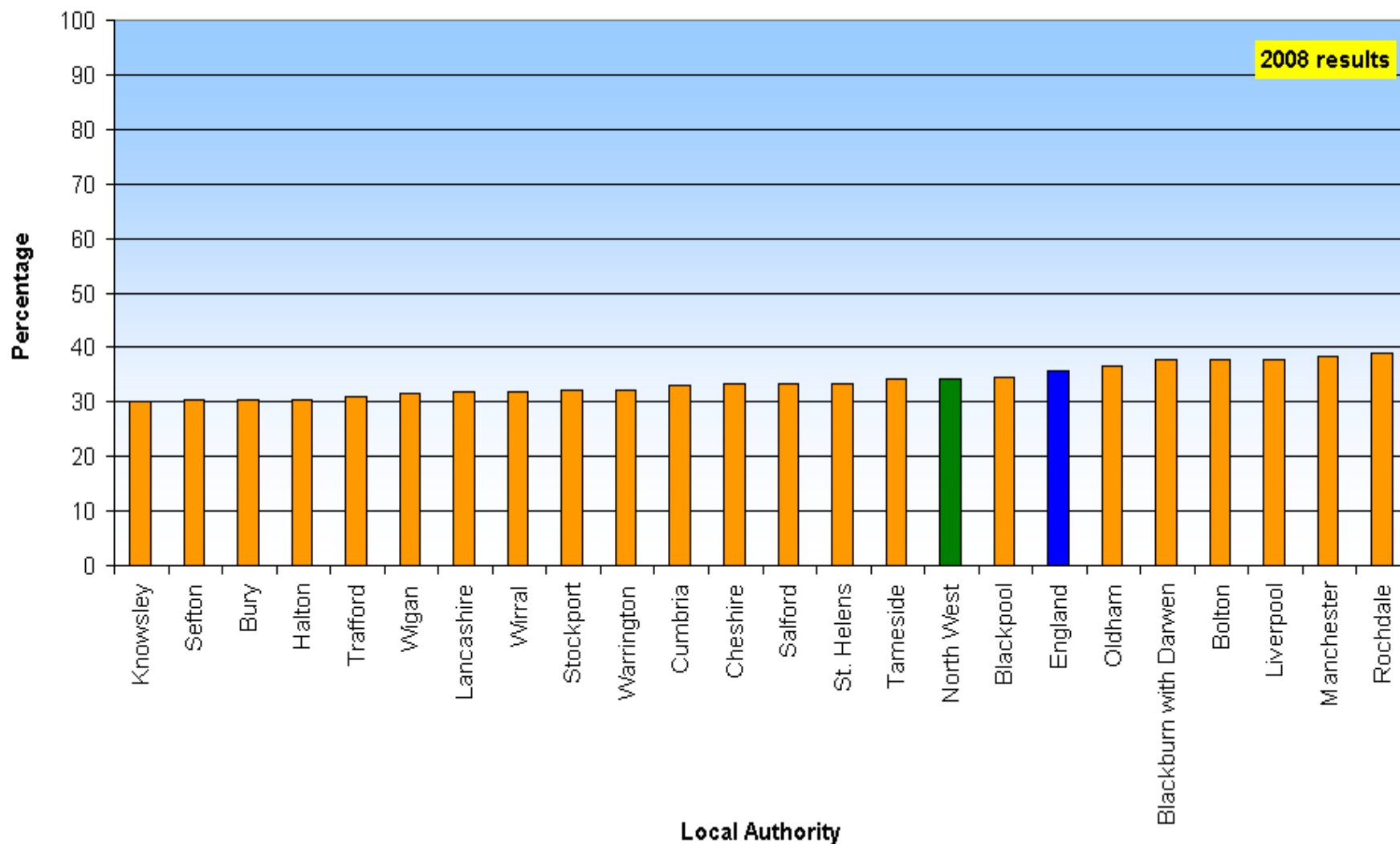


department for
children, schools and families



Narrowing the gap between the lowest achieving 20% in the Early Years Foundation Stage Profile and the rest

13
14



department for
children, schools and families



GOVERNMENT OFFICE
FOR THE NORTH WEST

Enjoy and Achieve

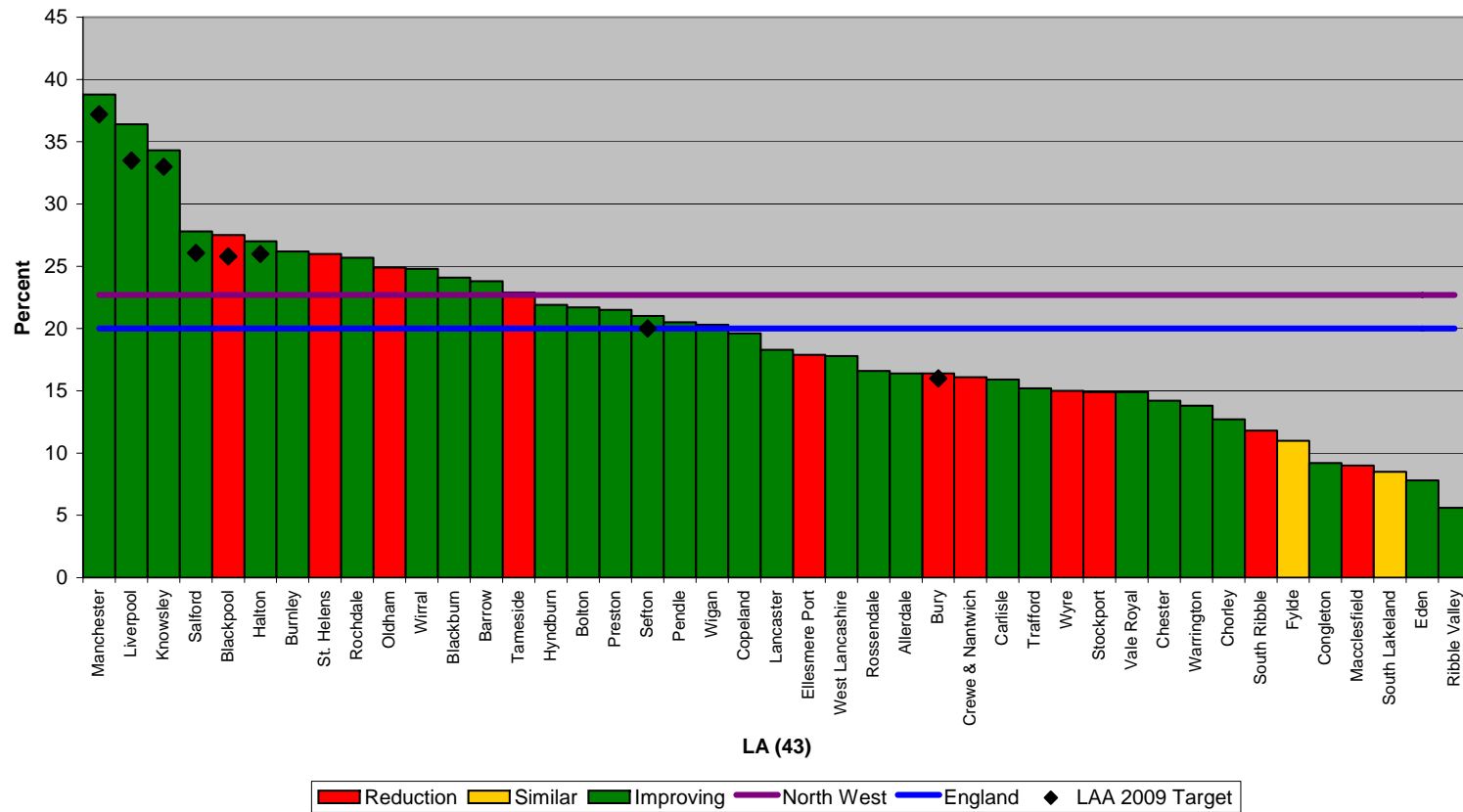
- The gap between lowest and highest attainment remains too high.
- Joint EY Leadership workshop with National Strategies/ Together for Children on “EY outcome duty/quality”
- Sharing of early learning and best practice from NW Pilots-
 - Single Funding Formula/Flexible Entitlement/*
 - 2 year old offer pilots*
- Focus on maintaining Quality of provision and Improving outcomes for most disadvantaged.



department for
children, schools and families

Child Poverty data slides

Child Poverty Rate (April 2007)





GOVERNMENT OFFICE
FOR THE NORTH WEST

NW LAA's Improving Outcomes

- 8 NW LAs prioritised NI 116 (Child Poverty)
- 2 NW LA's have prioritised NI 118 (Take up of Formal Childcare for low income families)
- 19 NW LA's have prioritised NI 112 (Teenage Pregnancy)
- 20 NW LA's have prioritised NI 117 (NEET)



department for
children, schools and families

Achieve Economic Well-being



GOVERNMENT OFFICE
FOR THE NORTH WEST

- Supported LA to take improve their take up childcare –
- Joint collaborative workshops with Jobcentre Plus and Health colleagues to support LA in their delivery of childcare
- Close working relationships with Child poverty Unit – building on NW December's regional event
- Establishing a network for child poverty leads
- OBA- Workshop with focus on the take-up of benefits/improving childcare for Economic LAA leads and EY strategic childcare leads in March



department for
children, schools and families

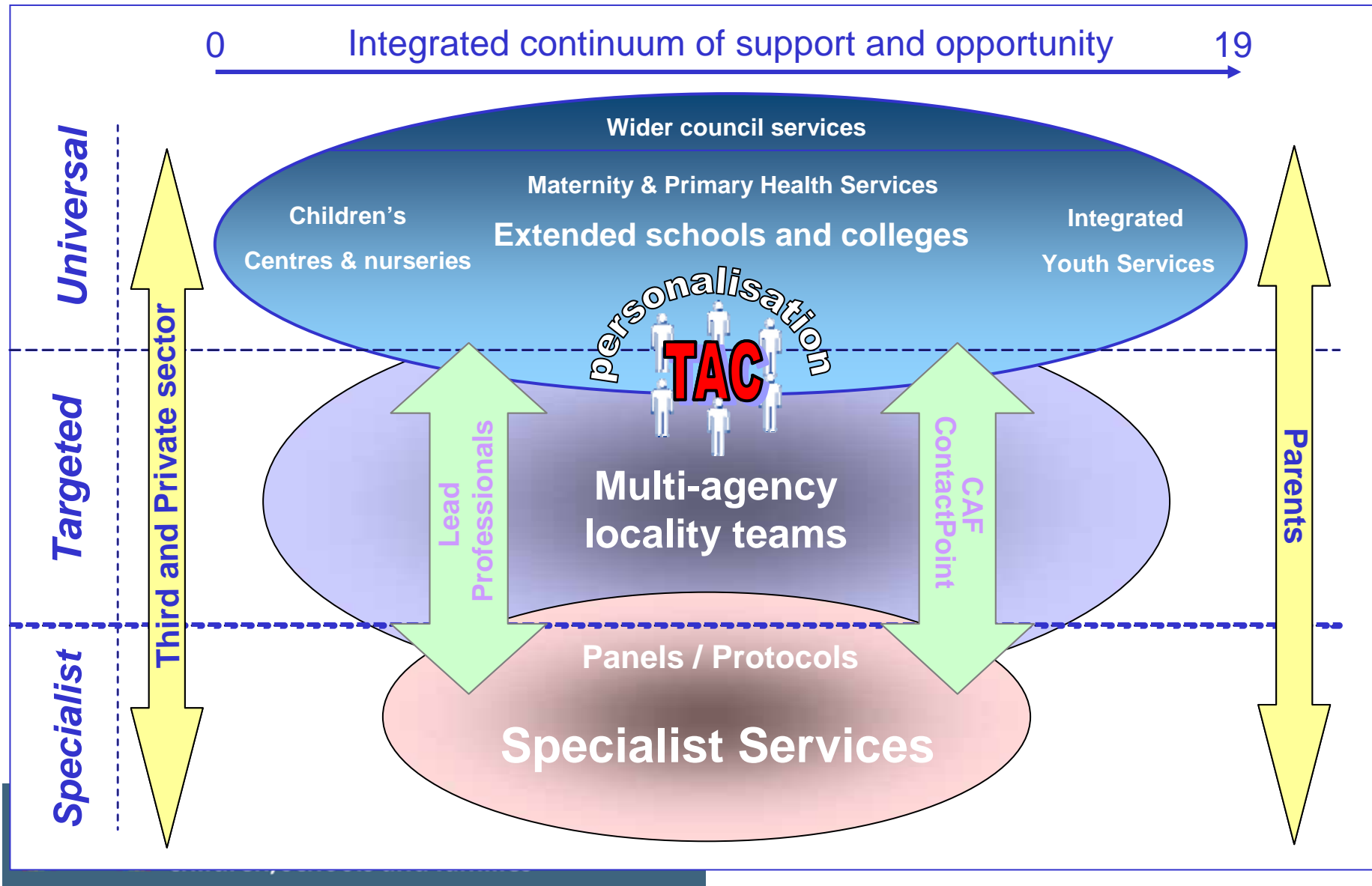


GOVERNMENT OFFICE
FOR THE NORTH WEST

2010 integrated 'whole system' frontline delivery of children's services



GOVERNMENT OFFICE
FOR THE NORTH WEST





Strategic Engagement Cycle/JISP process

