



GOVERNMENT OFFICE
FOR YORKSHIRE AND THE HUMBER

Early Years Knowledge Workshop

Heather Marsland

**Government Office for Yorkshire
and the Humber**

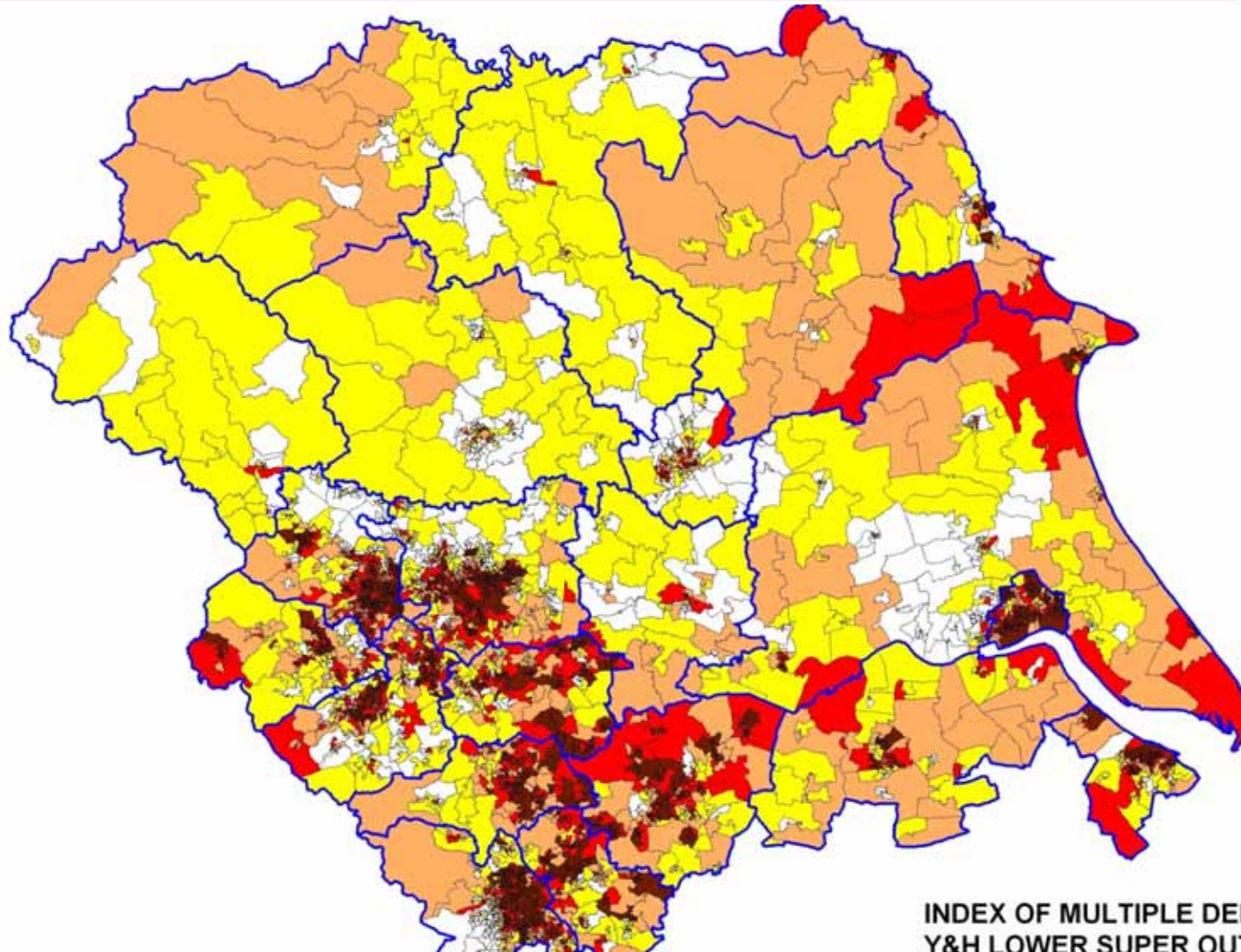


department for
children, schools and families

Yorkshire and The Humber Deprivation Index



GOVERNMENT OFFICE
FOR YORKSHIRE AND THE HUMBER



IMD QUINTILES
BY NATIONAL RANK

80 to 100 (475)
60 to 80 (663)
40 to 60 (605)
20 to 40 (643)
0 to 20 (907)

INDEX OF MULTIPLE DEPRIVATION 2007
Y&H LOWER SUPER OUTPUT AREAS
BY QUINTILE OF NATIONAL RANKING

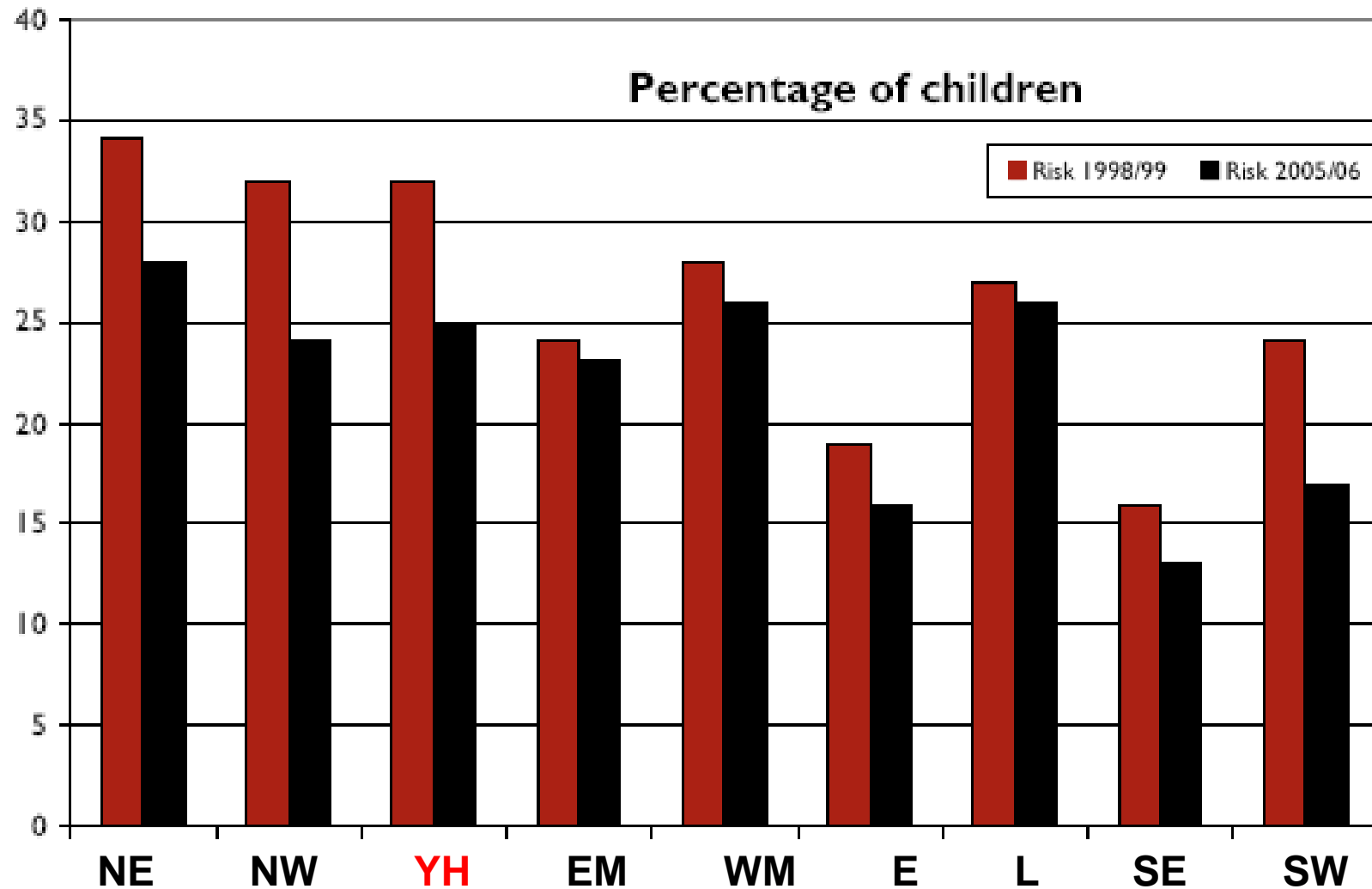


department for
children, schools and families

Risk of Child Poverty by Region



GOVERNMENT OFFICE
FOR YORKSHIRE AND THE HUMBER



department for
children, schools and families

Child Poverty Associated Indicators



Children Living in poverty are more likely to

Underachieve at **all key stages**

Be killed or seriously injured in **road traffic accidents**

Not benefit from **breast-feeding** and increased risk of **obesity**

Be admitted to hospital for unintentional and deliberate injuries



department for
children, schools and families

Yorkshire and The Humber LAAs



Better outcomes for young people was a dominant theme across the region in LAA priorities negotiations

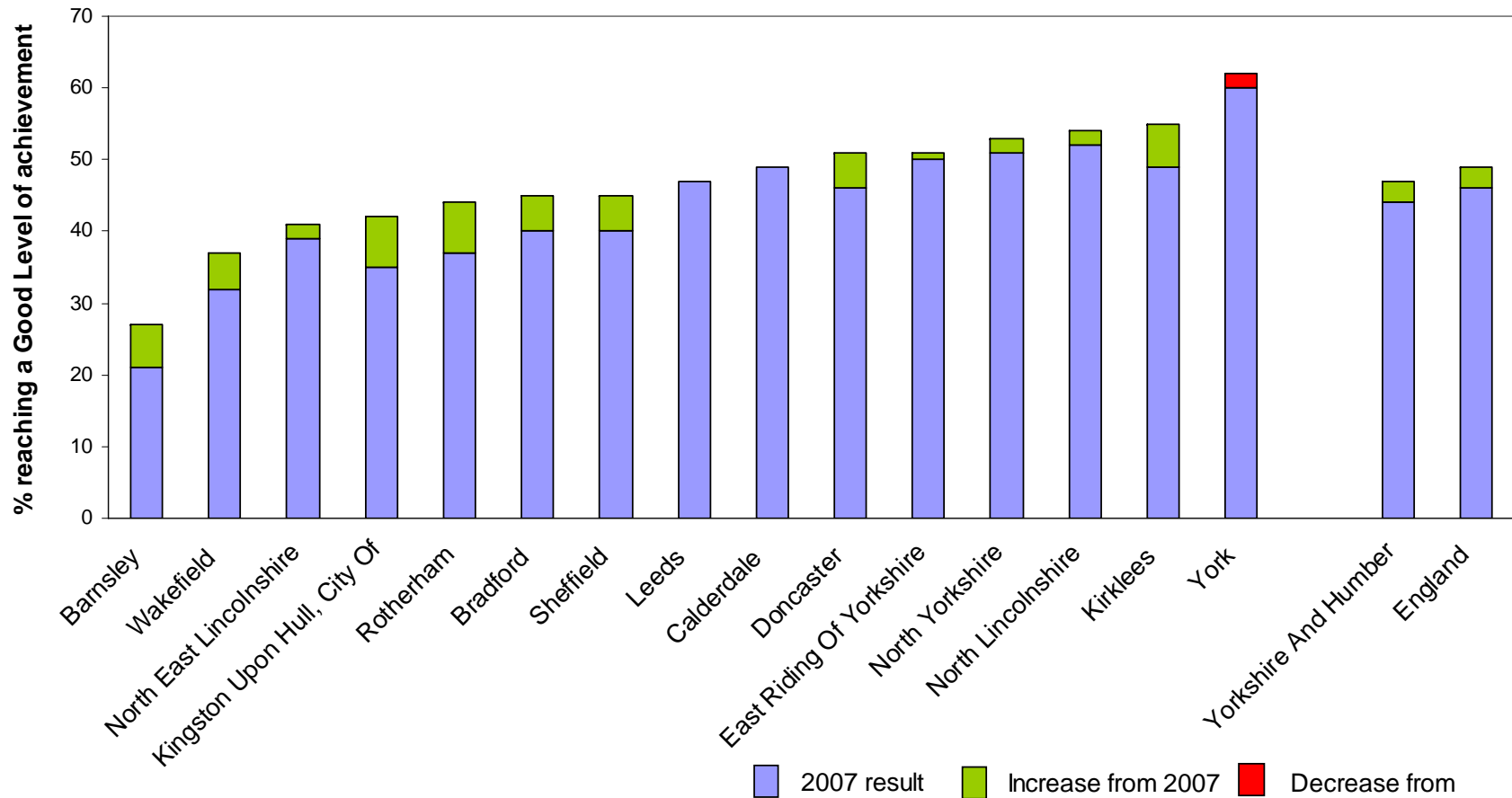
5 YH LAs prioritised Child Poverty, NI 116 (Barnsley, Doncaster, North East Lincolnshire, North Lincolnshire and York)

13 areas prioritised either NI 152 (working age people on **out of work benefits**) or NI 153 (worst performing neighbourhoods).



department for
children, schools and families

YH % children reaching a good level of FSP overall achievement from 2007 to 2008



DCSF Policy, Pilots and Projects



Free Early Education:

In the YH region, 112775 free part-time early education places taken up by 3 & 4 year olds in 2008, 19265 more than in 1997.



Family Nurse Project:

Focussing on first-time mothers under the age of 24. The project is testing a US model of early intervention which involves a structured programme of home visits by trained nurses. (Barnsley, Calderdale, Hull & N East Lincs)



department for
children, schools and families

DCSF Policy, Pilots and Projects

Children's Centres:

In the YH Region there are currently 335 designated Sure Start Children's Centres (164 Phase 1 Centres and 171 Phase 2 Centres) to meet the needs of 253,533 children under 5 and their families, with a further 59 centres in development..



Free Entitlement for Two Year Olds:

Targeted at disadvantaged families, piloted in Barnsley, Bradford, Doncaster, East Riding, Leeds, Sheffield, and York



DCSF Policy, Pilots and Projects



Family Intervention Project:

Family Intervention Projects also work through multiagency teams to support parents to enter or sustain employment; tackling problems that are barriers to work such as drug and alcohol misuse, poor hygiene or mental ill health and provide their children with real life chances (Barnsley Bradford, Doncaster, Hull, Kirklees Leeds, Sheffield & Wakefield)

Parenting Support Advisors:

Preventative school based role to support parents, concentrating on behaviour and attendance, parental engagement with schools and reducing barriers to learning (Barnsley, Leeds & N. Yorks)



department for
children, schools and families

DCSF Policy, Pilots and Projects



Increasing Take up of formal childcare in Minority Ethnic Families:

The project is about shaping delivery to extend the reach of good quality childcare and early years' provision among BME families, with increased take up as a result. (Bradford, Leeds & Rotherham)



Increased Access to Childcare for Disabled Children:

Increase access to childcare for families with disabled children, and to address the attitudinal barriers currently impeding such access. (Bradford)



department for
children, schools and families