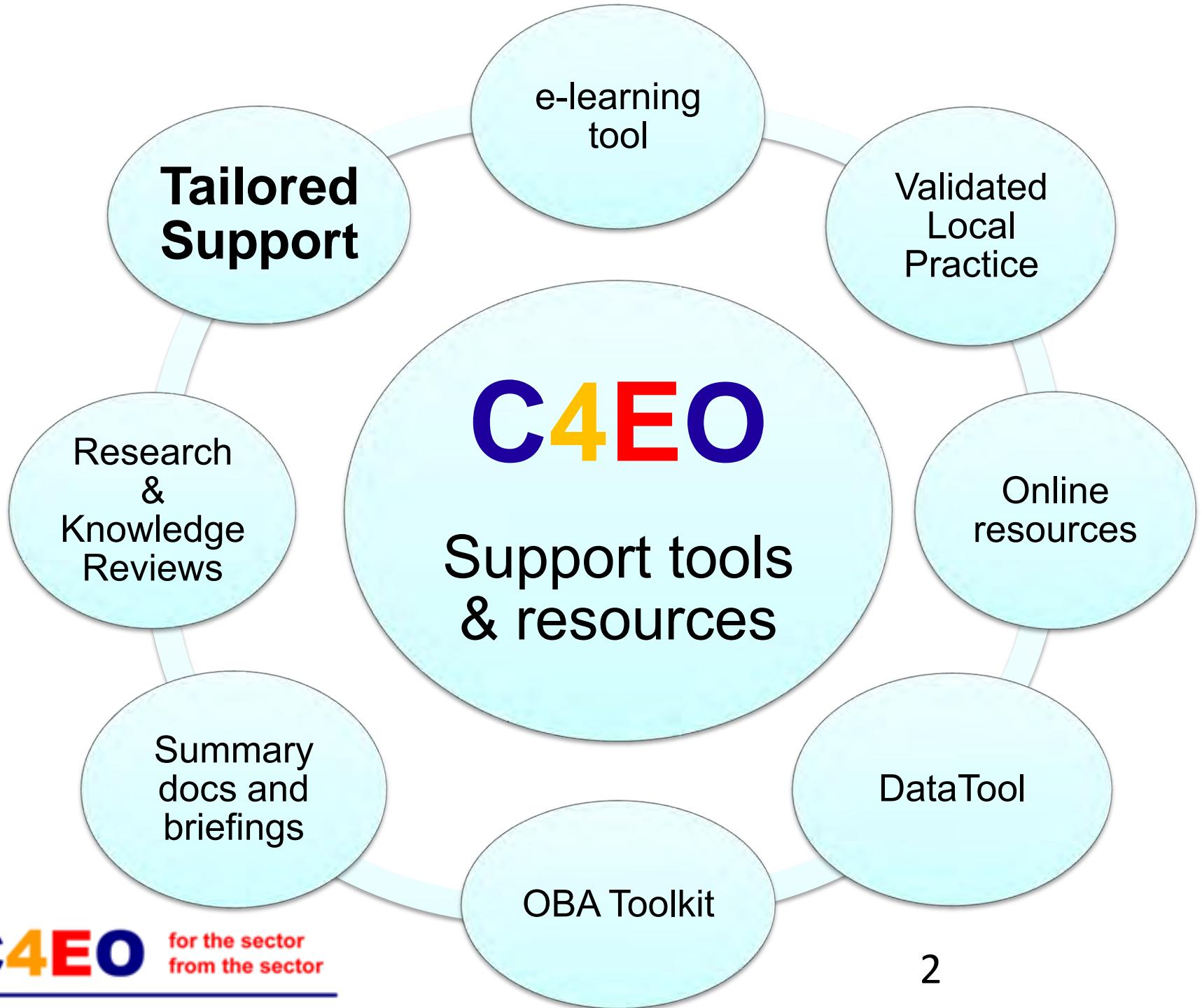


# C4EO Tailored Support





# Sector-led improvement

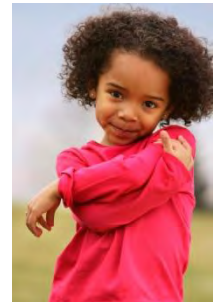
- C4EO is committed to supporting sector-led improvement.
- Local areas want help to ‘build their own capacity’.
- There is a vast wealth of expertise, skills and knowledge in the field.
- C4EO’s brief is to harness this, spread it and use it to help others in the sector.



# Capacity building

‘Building capacity’ is concerned with:

- **increasing understanding** about ‘what works’ (eg. disseminating knowledge, showcasing examples).
- helping us to **learn from practice** (this is often ahead of research).
- **developing skills** (by working alongside people).
- **promoting new ways of thinking.**
- **challenging** current strategies or ways of working.



# Sector Specialists: the what

- Peer advisors (IDeA accredited).
- C4EO-trained.
- Invited in (voluntary engagement, no targeting).
- Acting as ‘honey bees’ transferring knowledge.
- Catalysts for change.
- Working alongside others.
- Increasing understanding of what works and embedding this in local practice.
- Helping to plan for improvement.



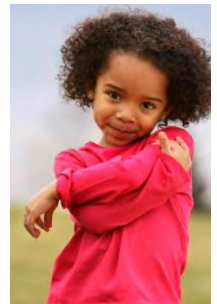
# Sector Specialists: the who

- ‘From the sector’ – people currently/recently working in the relevant field (in any agency).
- With operational credibility and a track record of achieving outcome improvement.
- Typically senior managers.
- On secondment to C4EO for an agreed number of days over 12 months.



# Tailored support

- Sector Specialists now available for assignments ('for the sector').
- May be deployed in an individual agency, or with several agencies in partnership, or across partnerships within the region.
- Cross-theme integrated support.
- Typical assignment might be 5 – 10 days.
- No cost to the requesting agency.
- Some possible examples .....



1. Help to spread knowledge of ‘what works’.
2. Support to use some of the audit tools to assess performance and practice locally.
3. Provide an external perspective to challenge local policy, processes and practice in light of the knowledge base.
4. Help to ‘translate’ C4EO outputs into an appropriate local improvement plan.





# Criteria

Assignments should:

- Align with local priorities (in the LAA).
- Align with the research priorities of C4EO.
- Complement any existing improvement support.
- Support strategic, systems-level change.
- Accelerate the expected rate of improvement of outcomes.
- Leave a sustainable legacy.
- Generate learning that other agencies can benefit from.



# Process

- Complete a request form – individual agency or collective.
- Discuss needs.
- Matching request.
- Agree terms of reference.
- Assignment undertaken.
- End of assignment report.



