

Improving the Educational Outcomes of Looked After Children

Dr. Liz Hunter

Virtual School Head

The Local Context

- 314 children and young people.
 - 16-18 year olds: 55
 - 11-16 year olds: 103
 - 4 -11 year olds: 79
 - Nursery: 18
- 34% with Statements of Special Educational Needs.
- Increasing number of unaccompanied asylum seekers.

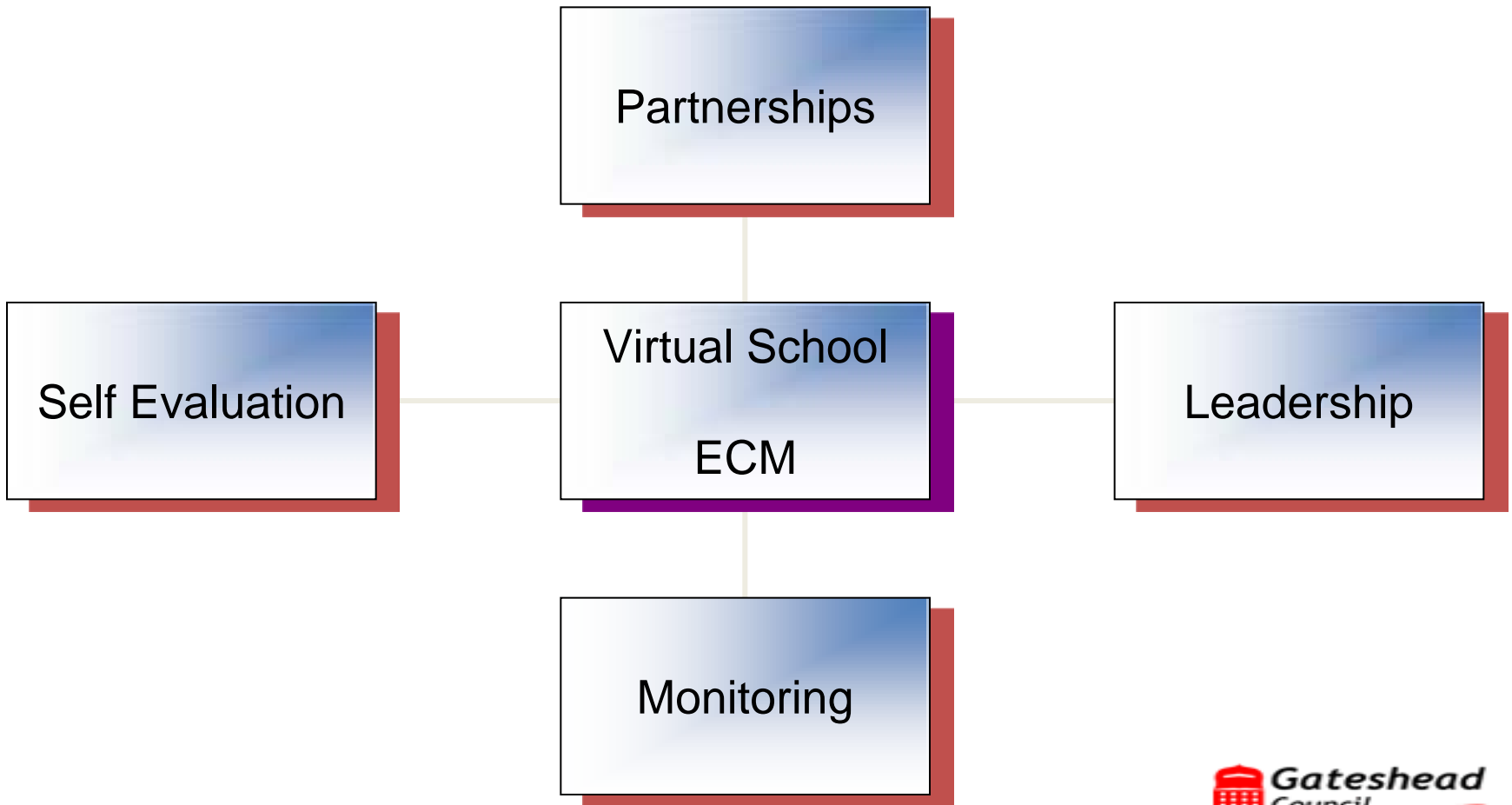
The Local Context... *(continued)*

- 2008/09: 1 permanent exclusion.
- 2008/09: 8% missing 25 or more days schooling.
- Improving GCSE results
 - 5 A* to C: 37%
 - 5 A* to C including English & Maths: 29%
 - 1 A* to G: 85%
- **BUT.....**

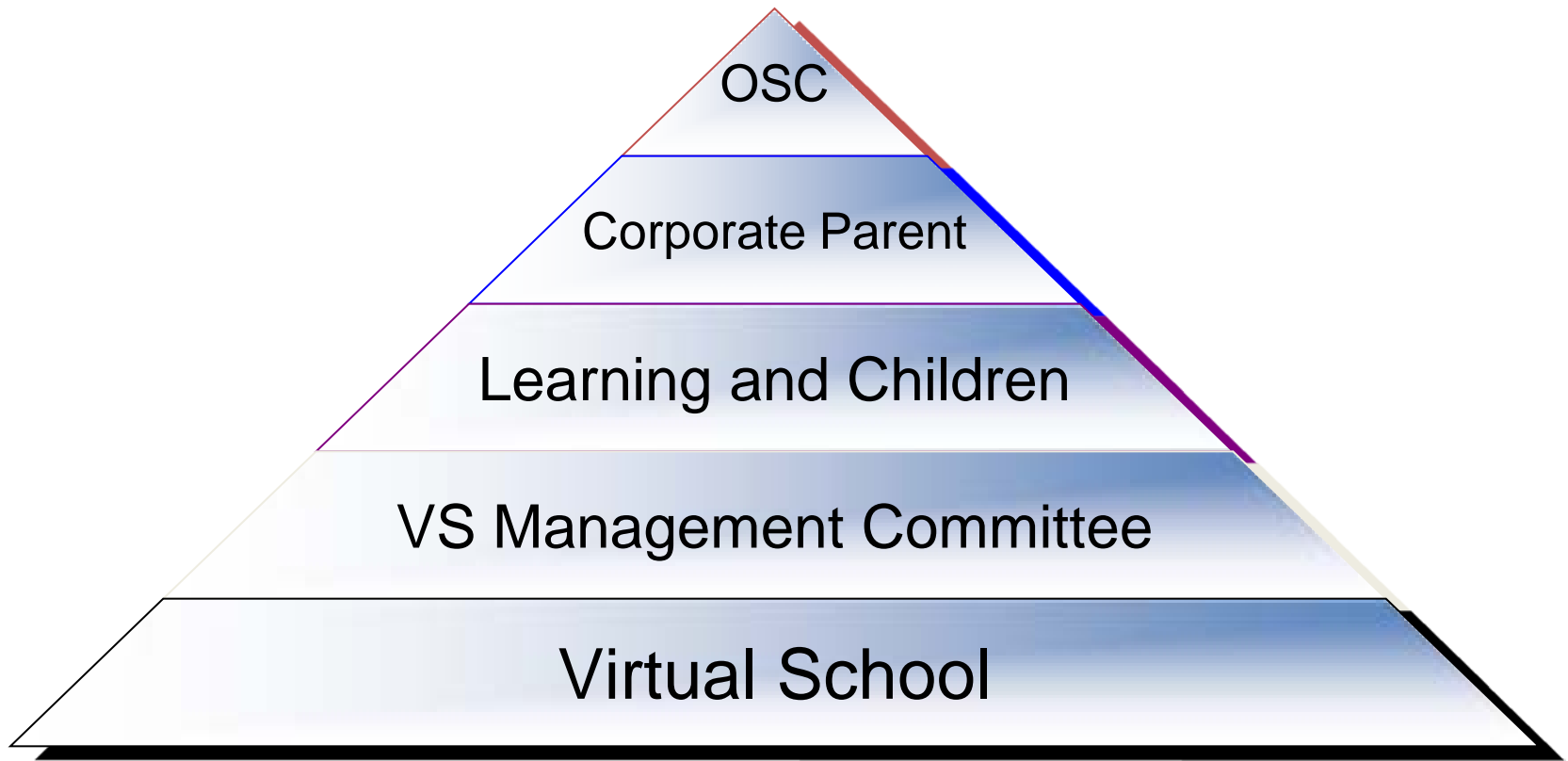
The Role of the Virtual School Head

- Strategic presence but able to work operationally.
- Strategically line managing the LAC Education Support Team.
- Developing inclusion into the National Strategies.
- Attends Head Teachers briefings and support groups.
- Virtual School Management/Governors group being reviewed in light of the continuation of the VSH post.
- The role of the named School Improvement Partner is different.
- Internal review of LAC Education Support Team.
- Virtual School is still in development.

Delivering a First Class Education



Delivering a First Class Education



IMPACT – the Journey Continues

- The development of the use of a range of data, including Fisher Family Trust data.
- Impact of the virtual school head on individual cases.
- Improved practice in working with schools, including special schools and PRUs, designated teachers and some FE colleges.
- Developing the focus of intervention from reactive to proactive, tracking from new into care and intervening early.

IMPACT – the Journey Continues

- Improved practice in working with social care colleagues, responding to and pre-empting problems.
- Better attainment results.....but not good enough.
- Private tutoring.
- Personal Education Allowances.
- Higher Education Bursary.

Challenges

- Difference in presence/status of virtual school heads nationally.
- Diversity of data management systems nationally.
- The lack of an operational system for handling PEPs in relation to out of authority placements .
- Understanding and skills of the workforce.
- Access to services and paths to constructive education placements for those who will not cope in a mainstream school.

What Next?

- Implement Gateshead's strategic plan "A First Class Education".
- Develop evaluations of PEA and Private Tutoring.
- Re evaluate the quality of PEPs.
- Establish the role of VSH firmly in LA structure and with young people.
- Complete review of LAC Education Support.
- Develop the role of the SIP.



Looking After Us

Ask Me...

Involve Me...

Please Don't Ignore Me...